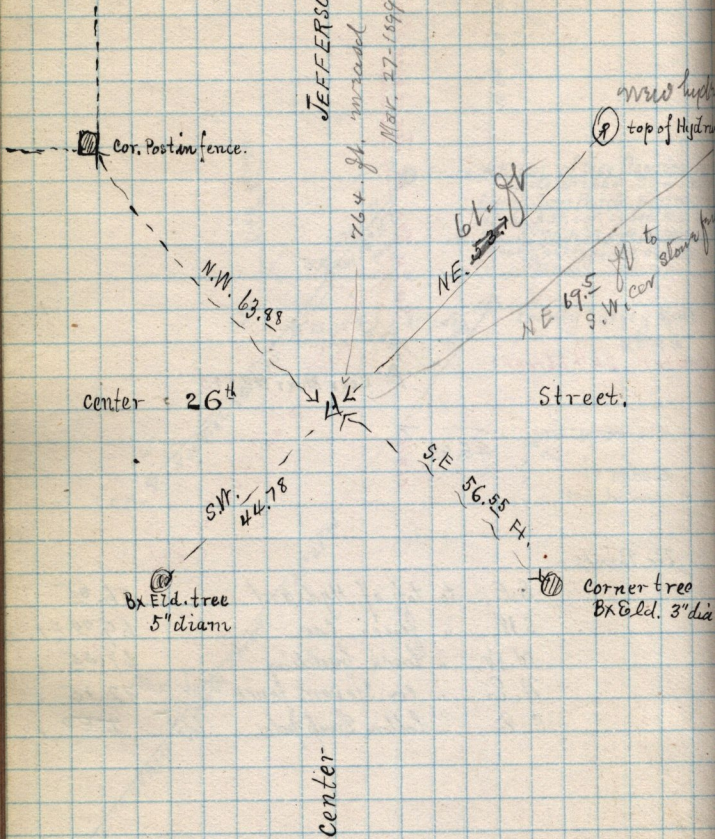


240

JEFFERSON AVENUE

76.4 ft. miscad

Mar. 27-1899 Temp. 50°



Cor. Post in fence.

N.W. 63.88

center = 26<sup>th</sup>

S.W. 44.78

BX Eld. tree  
5" diam



NE. 61.7

NE 69.5  
S.W. cor  
to slant fence

Street.

S.E. 56.55 Ft.

corner tree  
BX Eld. 3" dia

center

new hump  
top of Hydr